



DVX v3.1.7

Summary of Results

Page No. 1

DVX S/N: 268429

Date: October 01, 2020

Test Date: October 01, 2020 11:44

File: C:\Users\User\Documents\DVX Data\Ritec-cd-10.cdx

Disc ID: 30 map 2017

Disc Type: CD-R 80

UPC/EAN:

Test Speed: 24X MAX (Analog Measurements are made at 4X)

QuickScan OFF

MID Code: Ritek

Sessions: 1

Format: Mode 1 Data - Joliet

Tracks: 1

Sector Size: 2048

Disc Size: 358800 Sectors; 700.8 MB

Record Mode: Disc-at-Once

CIRC Test Results:

Av BLER = 1.1	Pk BLER = 19	10Pk BLER = 6
Av E11 = 1.1	Pk E11 = 12	10Pk E11 = 4
Av E21 = 0.0	Pk E21 = 10	10Pk E21 = 1
Av E31 = 0.0	Pk E31 = 11	10Pk E31 = 3
Av E12 = 0.4	Pk E12 = 148	10Pk E12 = 22
Av E22 = 0.0	Pk E22 = 0	10Pk E22 = 0
Av E32 = 0.0	Pk E32 = 0	10Pk E32 = 0
Tot E22 = 0	Tot E32 = 0	
Grade = C		

Analog Test Results:

Min. Ref = 64.0%	Ave. Ref = 66.7%	Max. Ref = 68.9%
Min. I11 = 0.52	Ave. I11 = 0.58	Max. I11 = 0.63
Min. I3 = 0.27	Ave. I3 = 0.31	Max. I3 = 0.35
Min. Beta = 0.4%	Ave. Beta = 2.0%	Max. Beta = 3.4%
Min. FE = 19.4	Ave. FE = 26.9	Max. FE = 42.8
Min. TE = 66.4	Ave. TE = 78.6	Max. TE = 90.4
Min. Jitter = 40.6	Ave. Jitter = 44.1	Max. Jitter = 49.9

Blank Disc Test Results: Not Performed

CIRC Test *** PASSED ***



DVX v3.1.7
Summary of Results

Page No. 2

Analog Test *** FAILED ***
Min I11 Under Limit
Min I3 Under Limit

Data Verification Results: Not Performed

ISO9660 Format Results: Not Performed

Postgap Test Results: Not Performed

Subcode Skew Test Results: Not Performed

Clover Signature:



DVX v3.1.7

Main View

Date: October 01, 2020

File: C:\Users\User\Documents\DVX Data\Ritec-cd-10.cdx

Disc Type: CD-R 80 Sessions: 01 Tracks: 01 Format: Data - Joliet Disc ID: 30 map 2017 Block Size: 2048

Error Rates

Ave BLER 1.1	Ave E11 1.1	Ave E21 0.0	Ave E31 0.0	Ave E12 0.4	Ave E22 0	Ave E32 0	Tot E22 0
Pk BLER 19.0	Pk E11 12.0	Pk E21 10.0	Pk E31 11.0	Pk E12 148.0	Pk E22 0	Pk E32 0	Tot E32 0
10 BLER 6.3	10 E11 4.1	10 E21 0.7	10 E31 2.7	10 E12 22.1	10 E22 0	10 E32 0	GRADE C

UPC/EAN:

MID code:

Record Mode:

Verify Errors:

PostGap: Skew:

Test

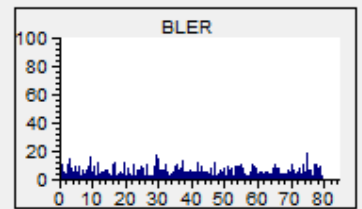
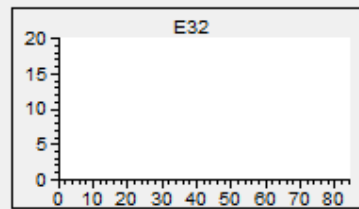
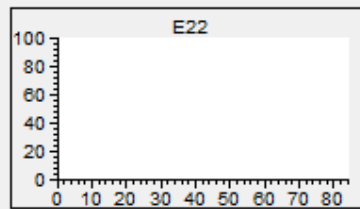
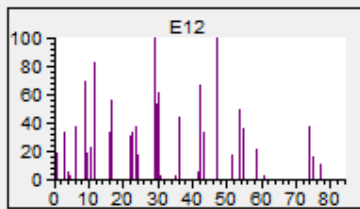
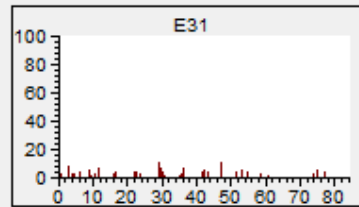
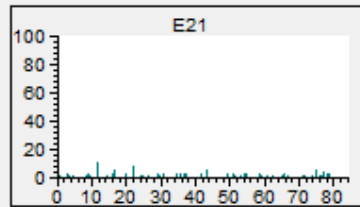
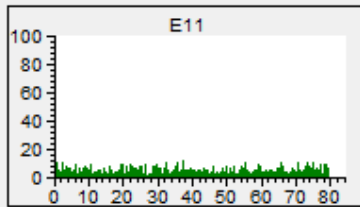
Analog Analog Only

Blank Test QuickScan

Enter Start and Stop Times in:

MSF Sectors

Start At: Stop At:





DVX v3.1.7

Main View

Date: October 01, 2020

File: C:\Users\User\Documents\DVX Data\Ritec-cd-10.cdx

Disc Type: CD-R 80 Sessions: 01 Tracks: 01 Format: Data - Joliet Disc ID: 30 map 2017 Block Size: 2048

Analog Values

Min REF 63.97	Min I11 0.52	Min I3 0.27	Min BETA 0.37	Min FE 19.38	Min TE 66.38	Min JIT 40.65
Ave REF 66.70	Ave I11 0.58	Ave I3 0.31	Ave BETA 2.03	Ave FE 26.91	Ave TE 78.58	Ave JIT 44.10
Max REF 68.87	Max I11 0.63	Max I3 0.35	Max BETA 3.37	Max FE 42.85	Max TE 90.37	Max JIT 49.94

UPC/EAN:

MID code:

Record Mode:

Verify Errors:

PostGap: Skew:

Test

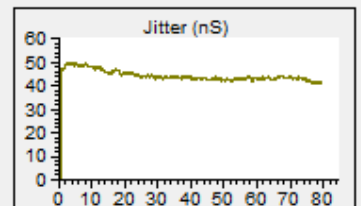
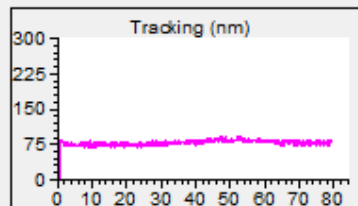
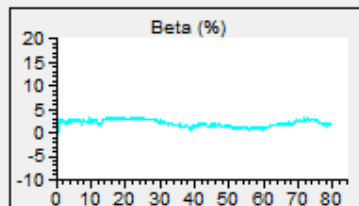
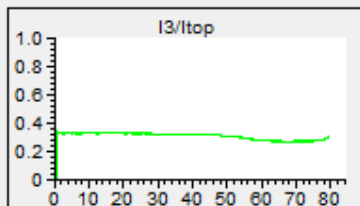
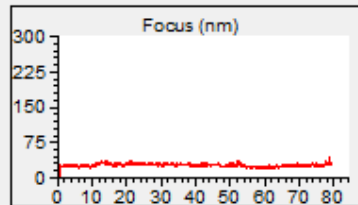
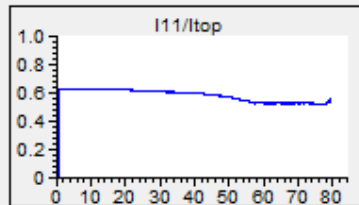
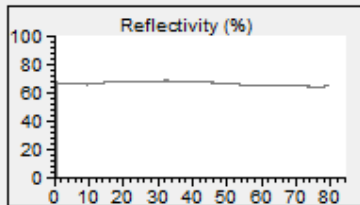
Analog Analog Only

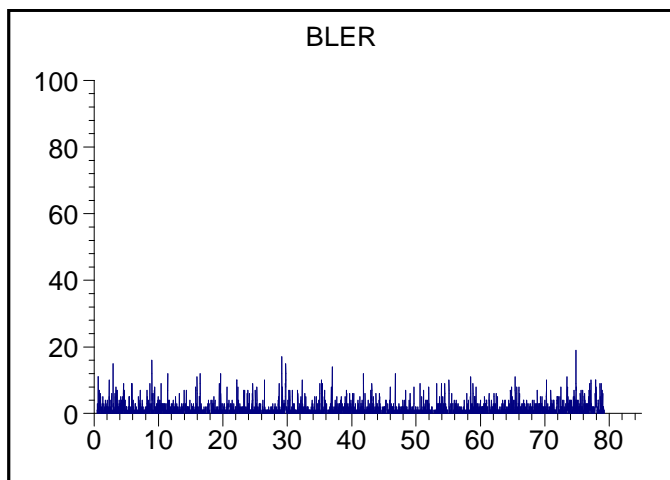
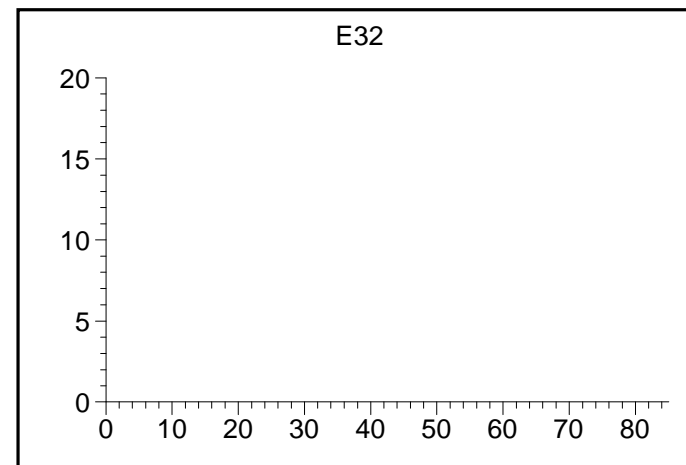
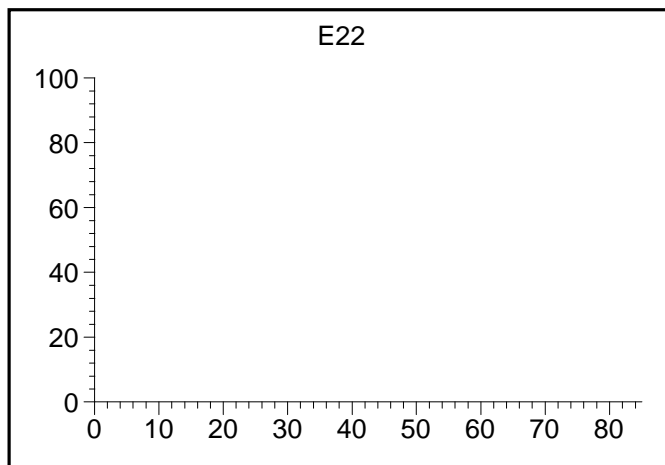
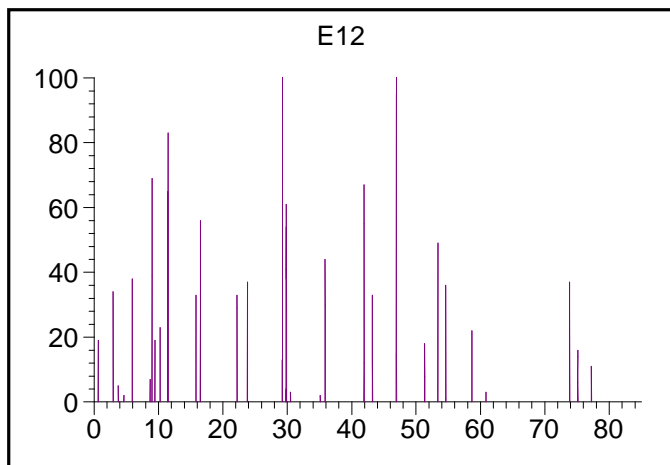
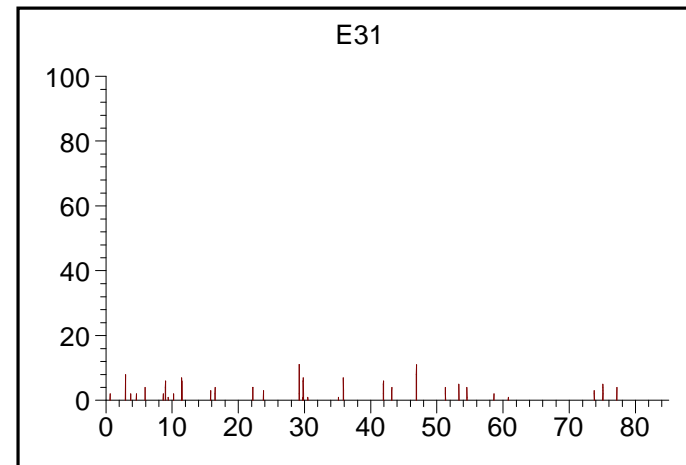
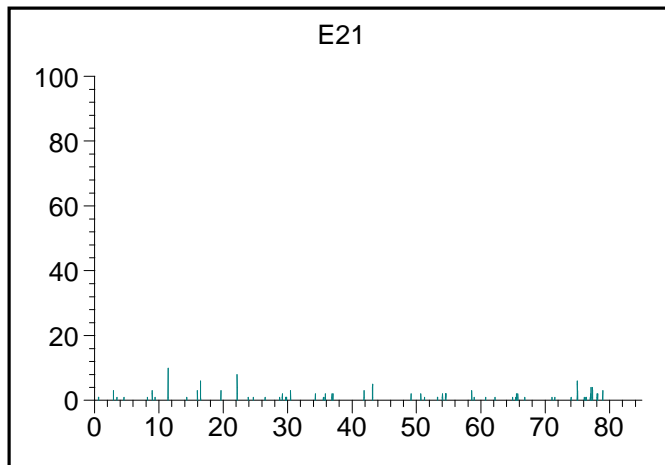
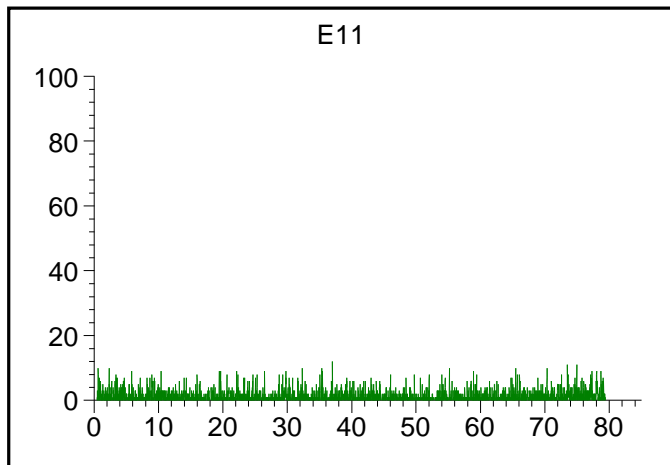
Blank Test QuickScan

Enter Start and Stop Times in:

MSF Sectors

Start At: Stop At:

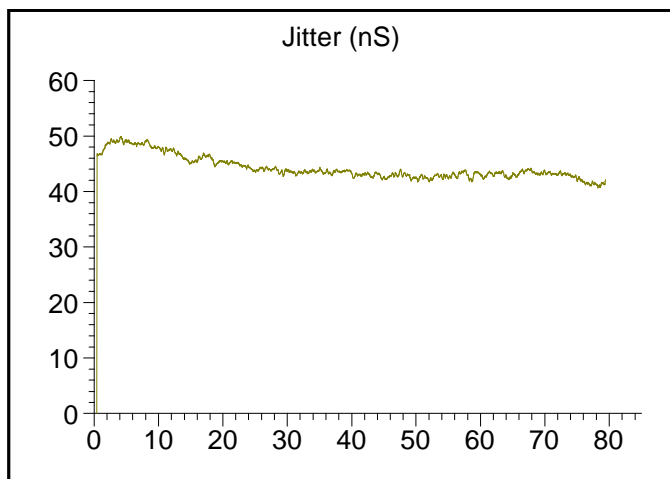
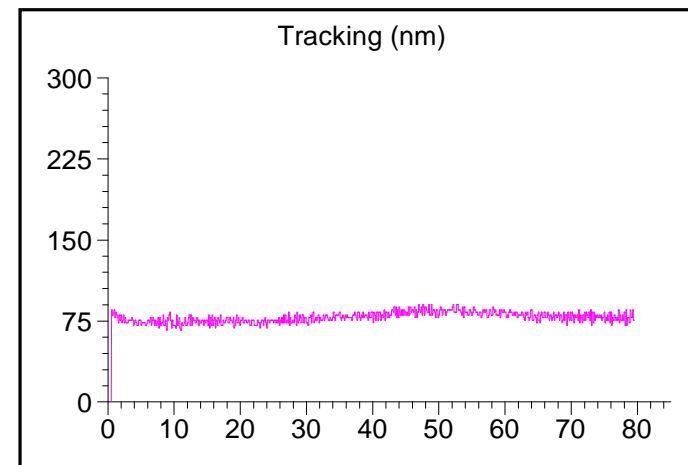
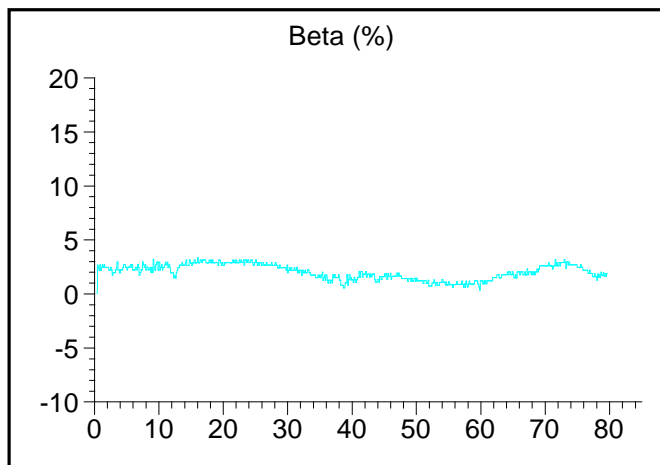
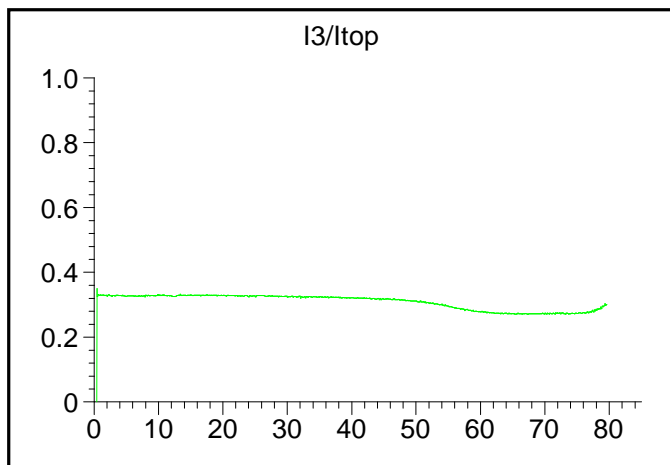
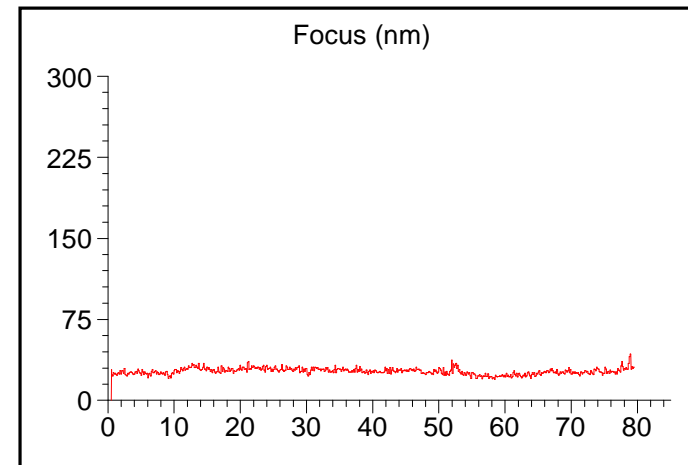
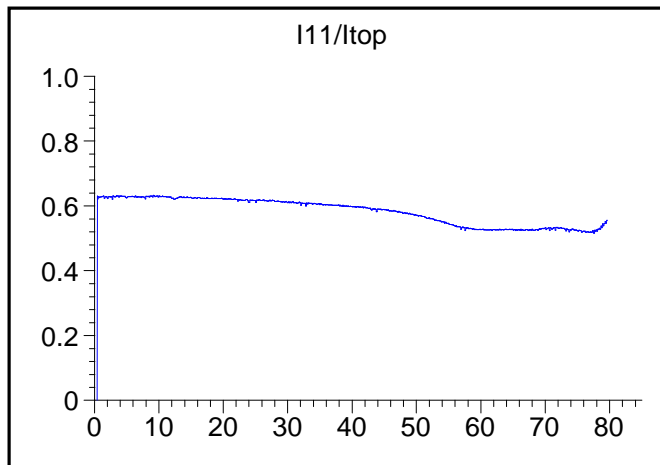
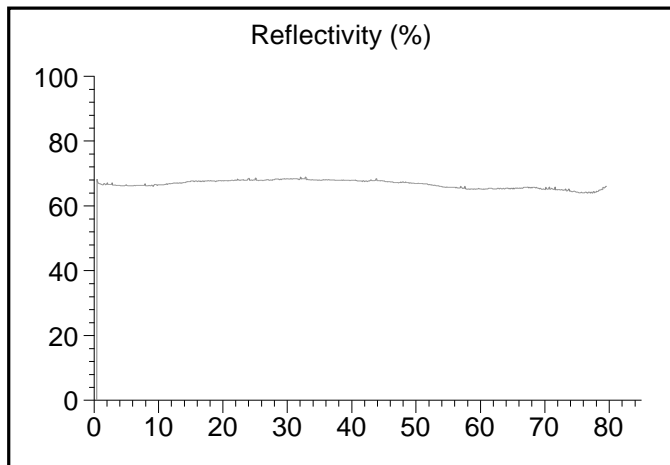




DVX[™]

DVD/CD Analyzer

Disc ID: 30 à¸¸ 2017
File: Ritec-cd-10.cdx
Test Date: October 01, 2020
Test Speed: 24X MAX



DVX™

DVD/CD Analyzer

Disc ID: 30 ìàð 2017
 File: Ritec-cd-10.cdx
 Test Date: October 01, 2020
 Test Speed: 4X MAX